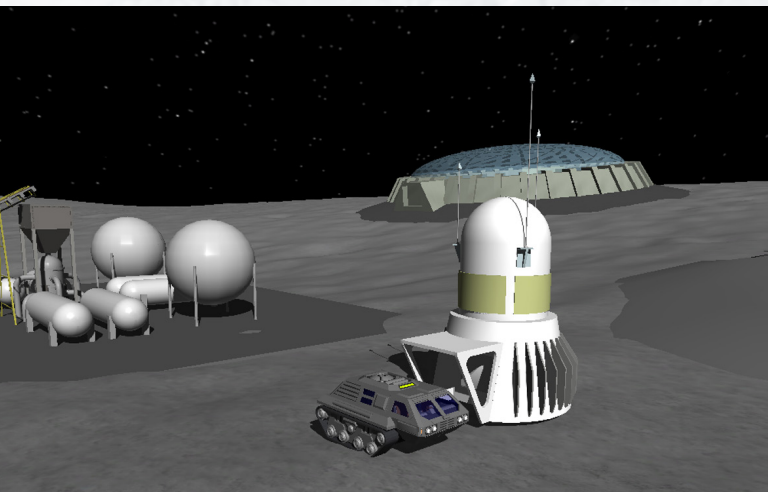




SEE

Simulation Exploration Experience



WHAT IS SEE?

The Simulation Exploration Experience (SEE) joins students, industry, professional associations, and faculty together for an annual modeling and simulation (M&S) challenge. SEE, led by NASA, champions collaborative collegiate-level modeling and simulation by providing a venue for students to work in highly dispersed inter-university teams to design, develop, test, and execute a simulated lunar mission. Participating teams gain valuable knowledge, skills, and increased employability by working closely with industry—Aegis Technologies Group, ForwardSim, Pitch, VT-MAK and VSEE.com—professionals, NASA, and faculty advisors.

WHO CAN PARTICIPATE?

If you are a student, professor, M&S industry professional, or educator, SEE encourages you to become involved! Visit **ExploreSim.com** for more information!

WHY SEE?

SEE is an effort to promote awareness of the importance and tools of modeling and simulation, and increase employability among university students through hands-on participation and mentoring with practitioners in this growing and recession-proof field. In short, SEE champions, challenges, and creates collaborative collegiate-level modeling and simulation education.

WHERE DO I START?

Starting and joining a SEE team is easy! We have instructions and a comprehensive knowledge base on our website **ExploreSim.com**—everything you'll need to form your own team, obtain a mentor, learn about SEE, and embark on this exciting adventure!

SEE 2015

With more missions, more teams, more 3D objects, and a state-of-the-art simulator, this year's Simulation Exploration Experience is going to be the most exciting one yet! Visit our website at **ExploreSim.com** for information about dates, venues, lodging, related events, and more for the upcoming SEE 2015!

CONTACT US!

Visit our website at **ExploreSim.com** to send us a message. Want to speak to a real human? Call SEE 2015 General Manager Stephen Paglialonga at **321-867-3357** or email him at **stephen.paglialonga@nasa.gov**.



SEE
Simulation Exploration Experience